

# Speed Data

## Common Road 22/12/24 – 11/01/25

**Total of 5,545 vehicles**

**2,693 Incoming**

### Top Speeds

**23/12 – 16.44 – 54mph**

**02/01 – 07.44 – 57mph**

**07/01 – 12.10 – 53mph**

**10/01 – 22.15 – 53mph**

**2,852 Outgoing**

### Top Speeds

**22/12 – 11.17 – 62mph**

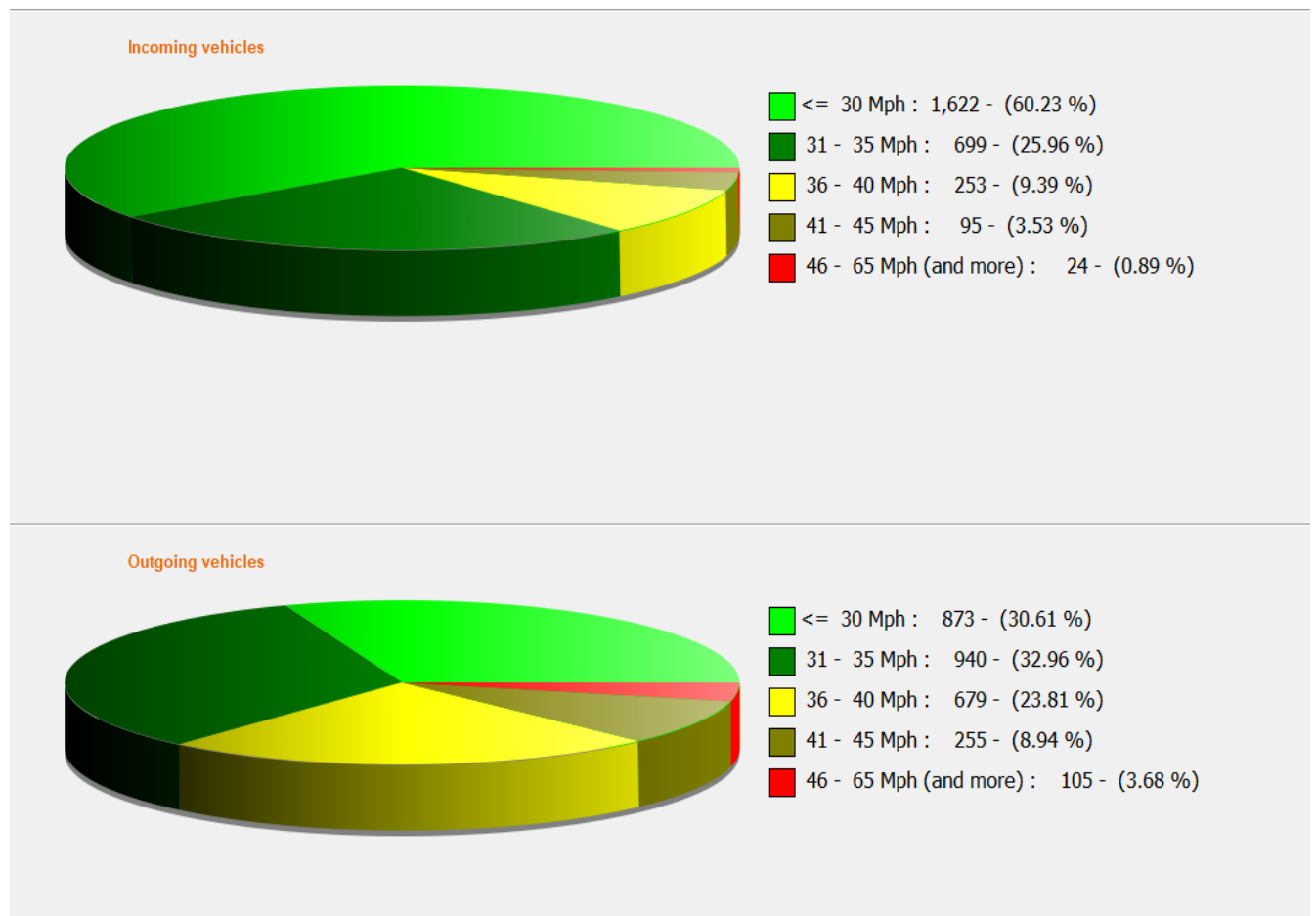
**24/12 – 15.18 – 60mph**

**29/12 – 07.31 – 56mph**

**02/01 – 07.44 – 57mph**

**03/01 – 14.27 – 59mph**

**09/01 – 13.23 – 57mph**



**39.77% of vehicles entering Common Road are speeding over 30mph**

**69.39% of vehicles leaving Common Road are speeding over 30mph**

## Bottom of Mill Hill 22/12/24 – 11/01 25

Total of 7,053 vehicles

3,250 Incoming

Top Speeds

23/12 – 22.04 – 48mph

24/12 – 14.41 – 45mph

30/12 – 20.30 – 46mph

03/01 – 18.13 – 47mph

10/01 – 18.32 – 46mph

3,803 Outgoing

Top Speeds

23/12 – 08.35 – 51mph

24/12 – 07.47 – 59mph

28/12 – 18.21 – 55mph

02/01 – 07.44 – 52mph

08/01 – 07.55 – 52mph

09/01 – 07.07 – 53mph



23.02% of vehicles entering the bottom of Mill Hill are speeding over 30mph

41.6% of vehicles leaving Mill Hill are speeding over 30mph

# Cricket Pitch 11/01/25 – 01/02/25

**Total of 8,471 vehicles**

**3,767 Incoming**

**Top Speeds**

**11/01 – 16.36 – 48mph**

**15/01 – 06.29 – 44mph**

**19/01 – 18.56 – 51mph**

**23/01 – 17.54 – 46mph**

**4,704 Outgoing**

**Top Speeds**

**16/01 – 07.52 – 47mph**

**21/01 – 04.09 – 55mph**

**27/01 – 06.13 – 52mph**

**29/01 – 16.12 – 51mph**



**10.28% of vehicles entering towards the Cricket Pitch are speeding over 30mph**

**12.03% of vehicles leaving after the Cricket Pitch are speeding over 30mph**

# Chapel Road 11/01/25 – 02/02/25

**Total of 5,501 vehicles**

**2,804 Incoming**

## Top Speeds

**21/01 – 18.01 – 49mph**

**24/01 – 08.08 – 50mph**

**24/01 – 12.44 – 51mph**

**01/02 – 12.50 – 52mph**

**2,697 Outgoing**

## Top Speeds

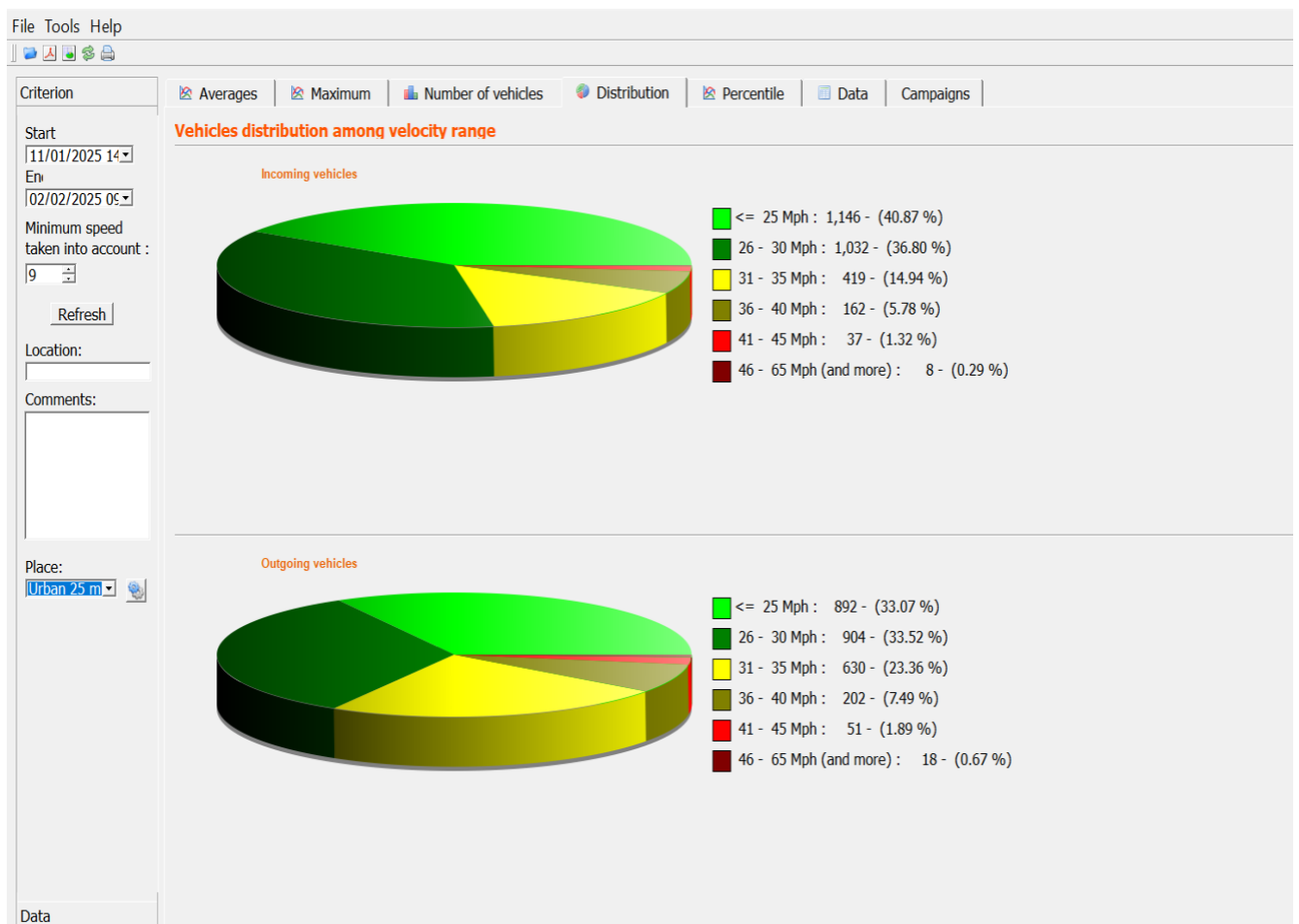
**12/01 – 18.01 – 50mph**

**15/01 – 18.55 – 51mph**

**17/01 – 15.54 – 67mph**

**18/01 – 12.16 – 54mph**

**25/01 – 15.40 – 51mph**



**22.33% of vehicles entering Chapel Road are speeding over 30mph**

**33.41% of vehicles leaving Chapel Road are speeding over 30mph**